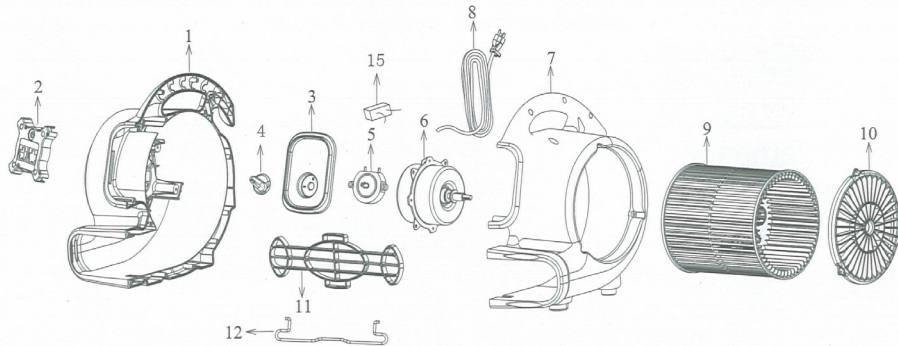


Parts List

Item No.	Parts Name	Item No.	Parts Name
1	Left Housing	2	Grid Cover (Motor Side)
3	Switch Plate	4	Switch Knob
5	Switch	6	Motor
7	Right Housing	8	Power Cord
9	Fan	10	Grid Cover (Fan Side)
11	Air Outlet Grid Cover	12	Kick Stand
13	Rubber Feet (Not Shown)	14	Screws and Nuts (Not Shown)
15	Capacitor		



- 7 -



OmniDry Mini Air Mover
Model No: AC085/AC085R

OWNER'S MANUAL



MFR PN: P-230A

PLEASE READ AND SAVE THESE INSTRUCTIONS

OmniPro Restoration
4282 S 590 W
Salt Lake City, UT 84123
(800) 637-3789
www.omniprorestoration.com

Index

Introduction	2
Operation / Instructions	3
Safety Instructions	4
Maintenance Instructions / Troubleshooting	5
Specifications	6
Parts List	7

Specifications

Model	AC085 / AC085R
Volt / Frequency	115V / 60Hz
Power ^{°°}	1/5 HP
AMP	2.3 A
Unit Weight	11 lbs.
Speeds	3
Unit Size (L x W x H) inch	10.7 x 12.4 x 13.3
Cord (Length / Dia.)	10 ft. / 14 AWG
Overheating Protecting	Thermally Protected
Rated Airflow (on high)	800 CFM
Positions	4 (0°, 20°, 45°, 90°)
Housing	Polypropylene

Maintenance Instructions

1. To keep OmniDry Mini Air Mover clean, use a damp cloth to wipe the surface of the housing.
2. Never clean OmniDry Mini Air Mover with water.
3. When not in use, unplug and store OmniDry Mini Air Mover in a dry indoor place out of reach of children.
4. Always disconnect OmniDry Mini Air Mover from its power source before performing any maintenance or cleaning.

Troubleshooting

For any problems not listed below, call your local distributor or contact our Service Department.

PROBLEM	POSSIBLE CAUSE	SOLUTION
Air Mover not running	No power input	Plug in the Air Mover; check circuit breaker
	Switch not turned on	Turn on switch
	Air Mover fan wheel jammed	Remove material jamming fan wheel
	Intake or exhaust blocked	Turn unit off and allow to cool, then remove blockage
Air Mover vibrate	Accumulation of dirt on fan blades	Clean Air Mover fan blades

Introduction

The OmniDry Mini Air Mover is a certified professional level multifunctional utility blower with the most efficient engineering design.

Features:

- Built-in dual outlets for daisy chain
- Low power draw with high velocity air flow, 800 CFM
- Super quiet motor and super lightweight
- Easy carrying handle and stackable up to 4 units high
- Easy and quick to disassemble for thorough cleaning and service
- Safety certified 10' power cord
- Easy cord wrap on handle
- 3-speed switch
- Durable and rugged housing
- 4 air flow positions (0°, 20° Kickstand, 45° and 90°)



Operation / Instructions

The OmniDry Mini Air Mover is intended to move air and to dry small areas where the large air mover is not applicable, such as crawl spaces, inside cabinets, under counters, inside ceilings, basements, etc. The Mini Air Mover can also be used as high velocity fan for household use.

1. OmniDry Mini Air Mover is shipped ready-to-use. Prior to plugging the unit into the power source, inspect completely for any shipping damage.
2. Plug the electrical cord into the 3-prong GFCI outlet.
3. Carefully place OmniDry Mini Air Mover on a stable, flat dry surface.
4. The unit is capable to be used at 4 different angles to direct air flow.
5. Turn the switch to the desired speed and make sure the unit operates normally.
6. OmniDry Mini Air Movers must be supervised at all times while in operation.



Storage

Air Movers can be stacked (up to 4) on their sides for storage.

NOTICE:
Stacking feature is not secure for transportation.



Daisy Chain

OmniDry Mini Air Mover can be connected in a “Daisy Chain” allowing for four additional OmniDry Mini Air Mover units to work together on one circuit.

*Only use OmniDry Mini Air Mover units together in the daisy chain.

Note: OmniDry Mini Air Mover has an on-board circuit breaker. If the auxiliary outlet overloads, the circuit breaker will trip. If the breaker trips, unplug the units and press the circuit breaker reset button. Plug the units back into the power source and turn on the switch.

Safety Instructions

1. To prevent electric shock, do not operate the unit in standing water. Never plug in or unplug the unit with wet hands or while standing in water.
2. To avoid risk of injury, do not direct air flow at face or body.
3. To reduce the risk of fire or electric shock, do not use OmniDry Mini Air Mover with any solid-state speed control device.
4. Use only with GFCI protected receptacles. Please contact a qualified electrician for verification and/or installation of a GFCI receptacle if necessary.
5. Do not operate OmniDry Mini Air Mover with a damaged cord or plug. Discard the unit or return it to an authorized service facility for examination and/or repair.
6. Unplug OmniDry Mini Air Mover from the power supply before servicing or cleaning.
7. Do not run the power cord under carpeting. Do not cover the power cord with throw rugs, runners, or similar coverings. Place the power cord away from traffic areas to prevent tripping.
8. Do not allow children to play with or around the OmniDry Mini Air Mover at any time.
9. Do not move or carry the OmniDry Mini Air Mover while unit is operating.
10. OmniDry Mini Air Movers in operation must be supervised at all times.