

R6030

# REED INSTRUMENTS

Temperature  
& Humidity  
Data Logger



Instructions  
Manual

REED Instruments

1-877-849-2127 | [info@reedinstruments.com](mailto:info@reedinstruments.com) | [www.reedinstruments.com](http://www.reedinstruments.com)

Table of Contents

Introduction ..... 2

Product Quality..... 3

Safety ..... 3

Features..... 3

Included ..... 3

Specifications ..... 4

Instrument Description ..... 5

Display Description ..... 6

    Supplemental Display Notes ..... 6

Operating Instructions..... 7-9

    Software Installation ..... 7

    Battery Installation or Battery Replacement ..... 7

    Setting Up or Downloading Data..... 7-8

    Supplemental Operation Notes ..... 8

    Setting the Combination Lock..... 9

FAQ's..... 9

Product Care ..... 10

Product Warranty ..... 10

Product Disposal and Recycling ..... 10

Product Support..... 11

Introduction

Thank you for purchasing your REED R6030 Temperature & Humidity Datalogger. Please read the following instructions carefully before using your instrument. By following the steps outlined in this manual your data logger will provide years of reliable service.

REED Instruments

1-877-849-2127 | info@reedinstruments.com | www.reedinstruments.com

## Product Quality

This product has been manufactured in an ISO9001 facility and has been calibrated during the manufacturing process to meet stated product specifications. If a certificate of calibration is required please contact the nearest authorized REED distributor or authorized Service Center. Please note an additional fee for this service will apply.

## Safety

Never attempt to repair or modify your instrument. Dismantling your product, other than for the purpose of replacing batteries, may cause damage that will not be covered under the manufacturer's warranty. Servicing should only be provided by an authorized service center.

## Features

- Stores Up To 6,000 Temperature And 6,000 Humidity Readings
- User Selectable Sampling Rate From 1 Sec To 24 Hrs
- Visible Alarm (LED) If Set Max/min Values Are Exceeded
- Wall Mount Bracket And Lock For Long-term Monitoring
- Real-time Clock With Date And Time Stamp
- Dual LCD Displays Current Temperature, Humidity, Min/max And Date/time
- Download And Analyze Data Directly To Computer Via Included USB Cable

## Included

- Mounting Bracket with Screws
- USB Cable
- Software
- Security Lock
- Battery

**REED Instruments**

1-877-849-2127 | [info@reedinstruments.com](mailto:info@reedinstruments.com) | [www.reedinstruments.com](http://www.reedinstruments.com)

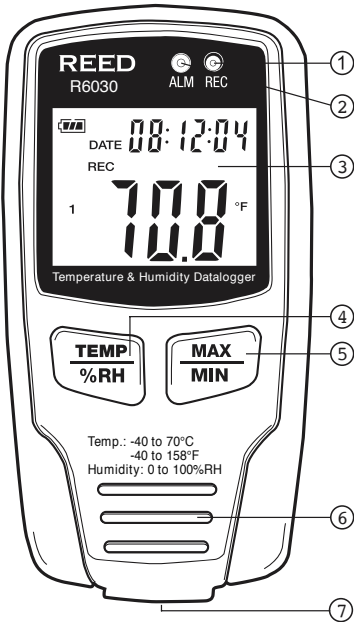
Specifications

Temperature	
Measuring Range:	-40 to 58°F (-40 to 70°C)
Accuracy:	±1.8°F (1.0°C)
Resolution:	0.1°F/°C
Humidity	
Measuring Range:	0 to 100% RH
Accuracy:	0 to 20% & 80 to 100%: ±5% 20 to 40% & 60 to 80%: ±3.5% 40 to 60%: ±3%
Resolution:	0.1% RH
General Specifications	
Display:	Dual Display, LCD
Min:	Yes
Max:	Yes
Settable Alarms:	Yes (Temp. and RH)
Sampling Rate:	Yes (2 Secs to 24 hours)
Internal Memory:	32k readings (16,000 Temp. and 6,000 Humidity)
Low Battery Indicator:	Yes
Power Supply:	3.6V battery
PC Connectivity:	Yes (USB)
Software:	Included
Product Certifications:	CE
Operating Temperature:	32 to 50°F (0 to 50°C)
Storage Temperature:	14 to 40°F (-10 to 50°C)
Operating Humidity Range:	0 to 100%
Dimensions:	3.7 x .9 x .3" (94 x 18 x 3mm)
Weight:	4.1 oz (115g)

REED Instruments

1-877-849-2127 | info@reedinstruments.com | www.reedinstruments.com

Instrument Description



1. Data Logging LED

2. Alarm LED

3. LCD Display

4. Temperature & Humidity Toggle Button
5. MAX/MIN Value Button

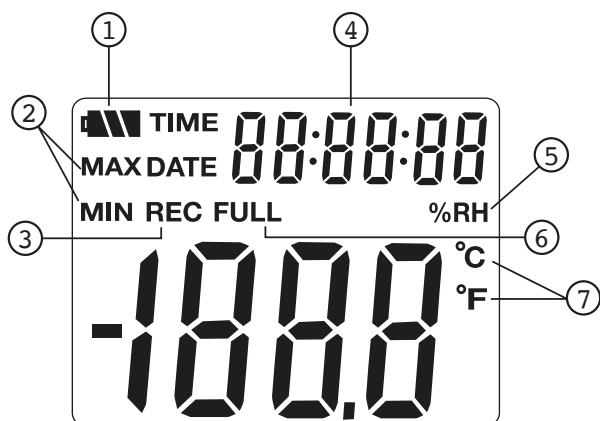
6. Temperature & Humidity Sensors

7. USB Port (Bottom)

REED Instruments

1-877-849-2127 | info@reedinstruments.com | www.reedinstruments.com

## Display Description



- |                                  |                                |
|----------------------------------|--------------------------------|
| 1. Low Battery Indicator         | 5. Relative Humidity           |
| 2. MAX/MIN Indicators            | 6. Memory Full                 |
| 3. Record Mode Active            | 7. Temperature Unit of Measure |
| 4. Date & Time (10 Sec Rotation) |                                |

## Supplemental Display Notes

1. Press the MAX/MIN button to view the recorded Max and Min values with the time they were recorded. The LCD will return to real-time display if no button is pressed for 40 seconds.
2. The Time and Date display will automatically toggle every 10 seconds.
3. If LO-LS is displayed, the temperature and humidity sensors need attention.

REED Instruments

1-877-849-2127 | info@reedinstruments.com | www.reedinstruments.com

# Operating Instructions

## Software Installation

Install the included software by placing the supplied program disc in the PC's CD-ROM drive. If the installation program does not automatically start, open and browse the CD-ROM drive from your computer. Double click on the setup file and follow the on-screen prompts to install the software.

If your computer does not have a CD drive please visit [www.reedinstruments.com/software](http://www.reedinstruments.com/software) to download the latest R6030 software.

If you are having trouble connecting to the R6030 it may be a USB driver issue. Please note USB drivers are supplied on the included CD and may need to be installed separately.

## Battery Installation or Battery Replacement

A 3.6V battery is provided with the R6030. Please note that only a 3.6V battery should be used with the instrument. In order to install the battery follow the steps below:

1. Slide the protective boot off the R6030
2. Use a small Phillips head screwdriver to remove the battery cover
3. Install (or replace) the battery
4. Reinstall the battery cover and slide protective boot back on

## Setting Up or Downloading Data

1. Once the software and battery have been installed, connect the R6030 to an available USB port on your PC with the included USB cable.
2. Double click the software icon on your desktop and the program will load.
3. Set up the data logger for a new session, or download saved data from a previous recording.
4. When setup is complete or data has been downloaded, the R6030 should be removed from the USB port in order to preserve battery life.
5. Full specifications and Operating System compatibility can be found on the product page at [www.reedinstruments.com](http://www.reedinstruments.com)

continued...

**REED Instruments**

1-877-849-2127 | [info@reedinstruments.com](mailto:info@reedinstruments.com) | [www.reedinstruments.com](http://www.reedinstruments.com)

6. If you have specific questions related to your application and/or questions related to software setup and functionality please contact the nearest authorized distributor or Customer Service at [info@reedinstruments.com](mailto:info@reedinstruments.com) or 1-877-849-2127.

### Supplemental Operation Notes

1. The R6030 will automatically begin recording once setup is complete and the datalogger is removed from the PC.
2. The R6030 needs to be reset from the software in order to start a new data logging session.
3. Please note the time & date on the R6030 must be updated from the software.
4. All stored data will be permanently erased when a new setup is completed. To save data before it is erased, ensure you download the existing data before setting up the datalogger for the next recording session.
5. The "REC" will flash at the programmed rate when the unit is datalogging.
6. When the set alarm limit is triggered, the Alarm LED will flash once each minute. When the Alarm LED flashes red, this indicates that the temperature value has exceeded the limit. When the Alarm LED flashes yellow, this indicates that the humidity value has exceeded the limit.
7. To conserve battery power, LED flashing frequency can be adjusted in the software. Alarm LEDs for temperature and humidity can be disabled via software.
8. The datalogger should be placed in an upright position when recording to avoid any damage to the sensors from possible condensation.

**REED Instruments**

1-877-849-2127 | [info@reedinstruments.com](mailto:info@reedinstruments.com) | [www.reedinstruments.com](http://www.reedinstruments.com)



## Setting the Combination Lock

The default combination on the included lock is 0-0-0. In order to change the code follow these steps:

1. Set the lock combination to 0-0-0 and press the release to open the lock.\*
2. Using a pointed object, press and hold the locking pin on the bottom side of the lock.
3. Set the new combination code and release the locking pin.

\*Please ensure the code is being entered on the side with the alignment bar marks on the combination lock.

## FAQ's

Once I've setup my R6030 how do I start recording?

The R6030 will begin recording once the software setup is completed. There is no button to begin recording.

How do I stop recording?

Unfortunately there is no way to stop recording in the field. In order to stop recording the R6030 needs to be connected to your PC.

Is the R6030 compatible with my Apple (MAC) computer or tablet?

At this time the R6030 is only compatible with PC computers.

I cannot install my software on my work computer, do you know why?

Please note that you will require administrative rights to install and run the R6030 software. In order to install and run the software you will have to contact your IT department/personnel.

Can I use my R6030 without the software?

In order to setup the instrument and retrieve data the R6030 software is required.

**REED Instruments**

1-877-849-2127 | [info@reedinstruments.com](mailto:info@reedinstruments.com) | [www.reedinstruments.com](http://www.reedinstruments.com)

## Product Care

To keep your instrument in good working order we recommend the following:

- Store your product in a clean, dry place.
- Change the battery as needed.
- If your instrument isn't being used for a period of one month or longer, please remove the battery.
- Clean your product and accessories with biodegradable cleaner. Do not spray the cleaner directly on the instrument. Use on external parts only.

## Product Warranty

REED Instruments guarantees this instrument to be free of defects in material or workmanship for a period of one (1) year from date of shipment. During the warranty period, REED Instruments will repair or replace, at no charge, products or parts of a product that proves to be defective because of improper material or workmanship, under normal use and maintenance. REED Instruments total liability is limited to repair or replacement of the product. REED Instruments shall not be liable for damages to goods, property, or persons due to improper use or through attempts to utilize the instrument under conditions which exceed the designed capabilities. In order to begin the warranty service process, please contact us by phone at 1-877-849-2127 or by email at [info@reedinstruments.com](mailto:info@reedinstruments.com) to discuss the claim and determine the appropriate steps to process the warranty.

## Product Disposal and Recycling



Please follow local laws and regulations when disposing or recycling your instrument. Your product contains electronic components and must be disposed of separately from standard waste products.

**REED Instruments**

1-877-849-2127 | [info@reedinstruments.com](mailto:info@reedinstruments.com) | [www.reedinstruments.com](http://www.reedinstruments.com)

## Product Support

If you have any questions on your product, please contact your authorized REED distributor or REED Instruments Customer Service by phone at 1-877-849-2127 or by email at [info@reedinstruments.com](mailto:info@reedinstruments.com).

Please visit [www.REEDINSTRUMENTS.com](http://www.REEDINSTRUMENTS.com) for the most up-to-date manuals, datasheets, product guides and software.

Product specifications subject to change without notice.

All rights reserved. Any unauthorized copying or reproduction of this manual is strictly prohibited without prior written permission from REED Instruments.

**REED Instruments**

1-877-849-2127 | [info@reedinstruments.com](mailto:info@reedinstruments.com) | [www.reedinstruments.com](http://www.reedinstruments.com)

# REED INSTRUMENTS

Test & Measure  
with ITH Confidence



Check out Our Latest Products!

REED Instruments

1-877-849-2127 | [info@reedinstruments.com](mailto:info@reedinstruments.com) | [www.reedinstruments.com](http://www.reedinstruments.com)